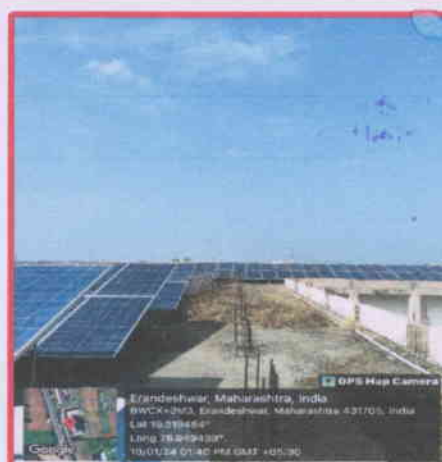
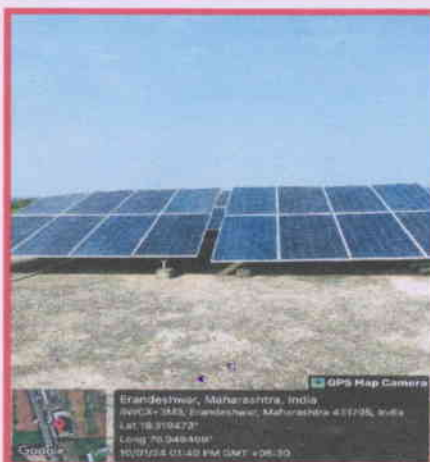


The Institution has facilities for alternate sources of energy and energy conservation measures

1. Solar energy
2. Biogas plant
3. Wheeling to the Grid
4. Sensor-based energy conservation
5. Use of LED bulbs/ power efficient equipment

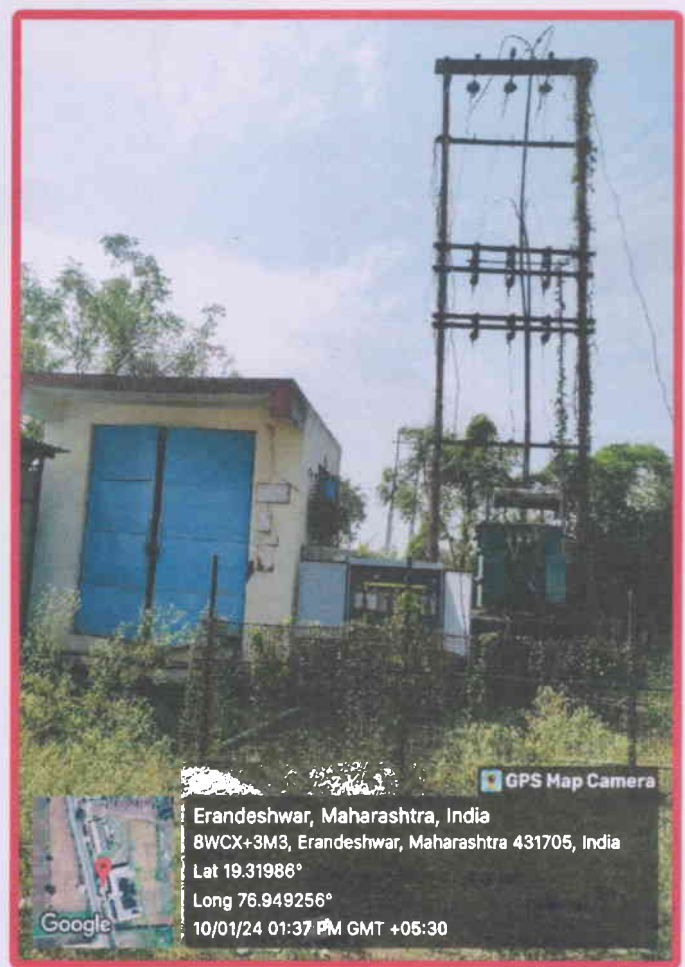
Present day need and trend is utilizing green source of energy to reduce carbon footprint with sustainable future. In this regard INDIAN government is also encouraging the same with subsidies. Better late than ever, it's time to protect the nature by utilizing green energy in place of fossil fuels. In this aspect, Sou Shantadevi Vedprakash Patil Ayurved College & Research Institute, Hatta is taking the lead to reduce carbon emissions by utilizing 70% of energy from solar.



PRINCIPAL
S.S.V.P. Ayurved College & R.I.
Hatta, Tq. Basmath Dist. Hingoli

Solar Energy and Wheeling to the grid Sou Shantadevi Vedprakash Patil Ayurved College & Research Institute, Hatta uses solar technologies to diversify their energy sources, improve efficiency, and save money. Energy developers and utilities use solar photovoltaic and concentrating solar power technologies to produce electricity on a massive scale to power in the campus. The College Management has taken following alternative sources in conserving the energy. All-Blocks are equipped with solar photovoltaic to address climate change issues by reducing reliance on conventional fossil fuel based energy. With net metering connection, Solar PV System is connected to main electricity grid to allows to sell power generated by solar panels.

Step up Transformer Yard



[Signature]
PRINCIPAL
 S.S.V.P. Ayurved College & R.I.
 Hatta.Tq.Basmath Dist.Hingoli

Solar Lights

We will be using solar panel and batteries to store and then convert solar energy to electrical which is to be used for street lighting system. During daytime, solar energy is stored and then depending upon natural light illumination in surrounding the array of LEDs glow using same convert solar energy. The on/off movement of LEDs depends upon input/output of sensors.



GPS Map Camera

Hingoli, Maharashtra, India
8XC2+P35, Hingoli, Maharashtra 431705, India
Lat 19.321369°
Long 76.950102°
09/12/23 01:59 PM GMT +05:30

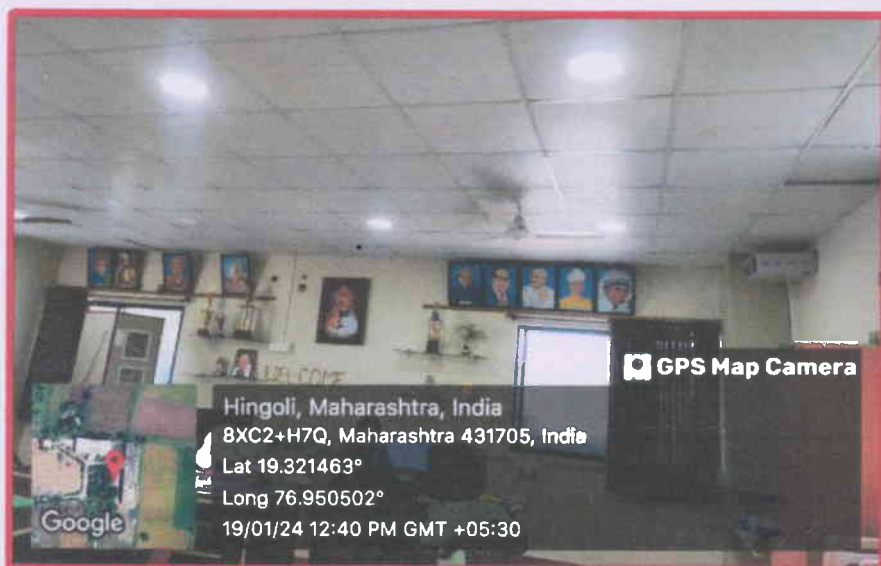
Google


PRINCIPAL

S.S.V.P. Ayurved College & R.I.
Hattha.Tq.Basmath Dist.Hingoli

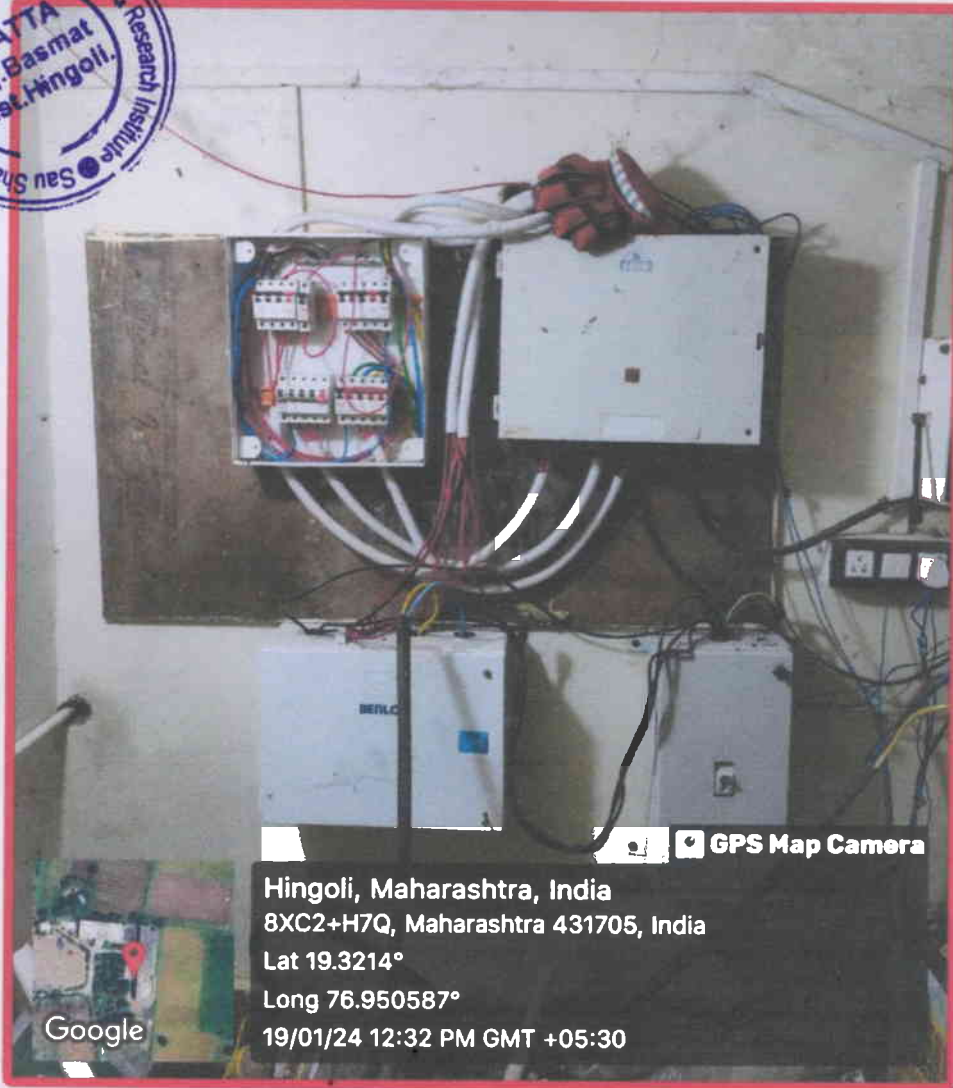
LED LIGHTS IN Buildings

Use of LED bulbs/ power efficient equipment. The college management has provided following facilities in conserving the energy and power efficient equipment Master Switches for each Room to shut down power of entire room when not in use. CRT monitors are replaced with LCD/LED Monitors. The CFL fittings with higher rating wattage are replaced with LED fittings with lower wattage with the same luminous level in street Lights and other possible areas of Campus. Energy Star certified products installed in the campus are air conditioners, refrigerator, ceiling fan and others.




PRINCIPAL
S.S.V.P. Ayurved College & R.I.
Hatta, Tq. Basmath Dist. Hingoli

NET METERING CONNECTION



GPS Map Camera

Hingoli, Maharashtra, India
8XC2+H7Q, Maharashtra 431705, India
Lat 19.3214°
Long 76.950587°
19/01/24 12:32 PM GMT +05:30


PRINCIPAL
S.S.V.P. Ayurved College & R.I.
Hatta.Tq.Basmath Dist.Hingoli